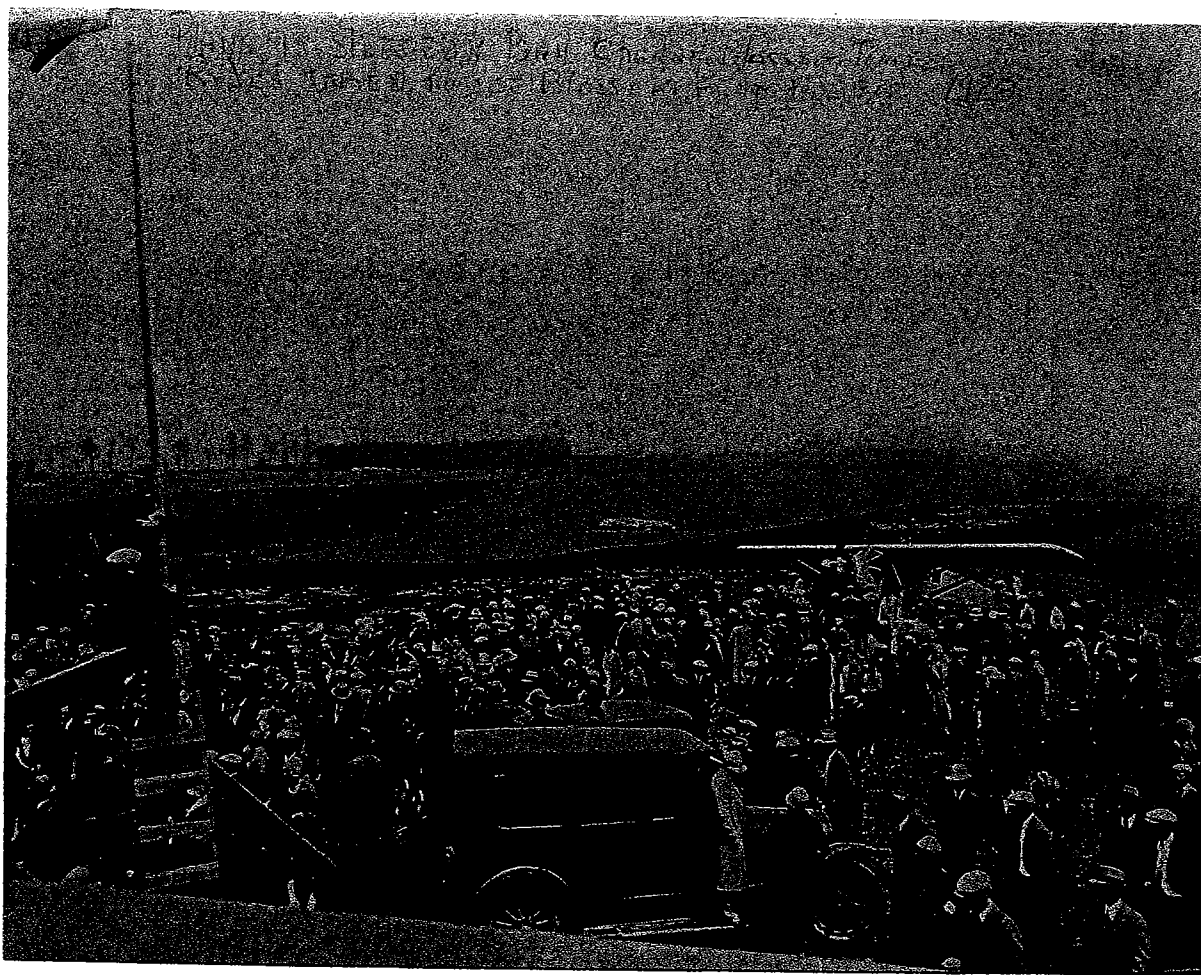


Wreckage of Wally Arntzen's Canuck OX5
after it crashed in 1926 or 1927.

Photo: Courtesy of Henry Olsen



A Ryan Brougham was used to take up passengers at the Reynolds Cherryland Airport
during the Cherry Blossom Festival of 1929.

Photo: Courtesy of Door County Historical Museum

(Gov. Kohler came in alone with the Ryan. Roger Schroeder shook hands with him at LaSalle Park.)

